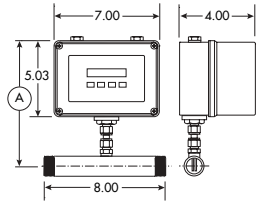


DETAIL

DIMENSIONAL DRAWINGS FOR SAGE MASS FLOW METERS

Note: Flanged Flow Bodies Optional¹¹

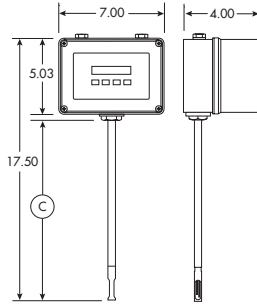
(All Dimensions in Inches)



SIG SERIES INTEGRAL GENERAL PURPOSE MASS FLOW METER

In-Line Style^{1, 8, 9}

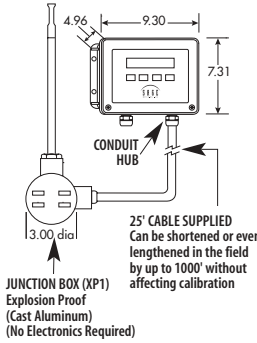
NEMA 4X Enclosure (ABS Plastic). 150# or 300# flanged ends are optionally available. (1" Flow Body shown)



SIG SERIES INTEGRAL GENERAL PURPOSE MASS FLOW METER

Insertion Style^{2, 8, 9}

NEMA 4X Enclosure (ABS Plastic). 150# or 300# flanged mounting is optionally available. Available probe lengths (C) are 6", 12", 15", 18", 24", 30", 36" or 48".

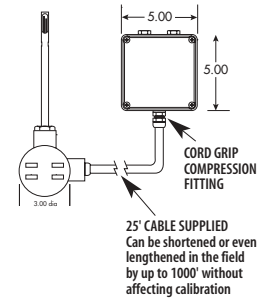


SRG SERIES REMOTE GENERAL PURPOSE MASS FLOW METER¹⁵

Insertion Style^{2, 8, 9}

(Also available as In-Line Style)

NEMA 4X Enclosure (Fiberglass¹⁴). 150# or 300# flanged mounting is optionally available. Available probe lengths (C) are 6", 12", 15", 18", 24", 30", 36" or 48".

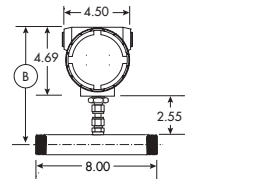


SRL SERIES REMOTE LITE (BLIND) MASS FLOW METER

Insertion Style^{2, 8, 9, 10}

(Also available as In-Line Style)

NEMA 4X Enclosure (ABS Plastic). 150# or 300# flanged mounting is optionally available. Available probe lengths (C) are 6", 12", 15", 18", 24", 30", 36" or 48".



SIL SERIES INTEGRAL EXPLOSION PROOF¹² (BLIND) MASS FLOW METER

In-Line Style^{1, 8}

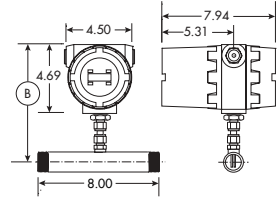
(Also available as Insertion Style)

Explosion Proof Enclosure (Cast Aluminum), Class I, Division I, Group C, D. 150# or 300# flanged ends are optionally available. (1" Flow Body shown)

IN-LINE METER DIMENSIONS

Flow Body Length Shown on Page 4

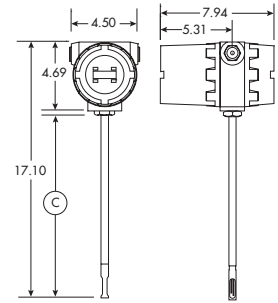
Pipe Size	Gen. Purpose (A)	Expl. Proof (B)	Pipe Size	Gen. Purpose (A)	Expl. Proof (B)
1/4"	8.03"	7.33"	1-1/2"	8.65"	7.95"
3/8"	8.09"	7.39"	2"	8.90"	8.20"
1/2"	8.15"	7.45"	2-1/2"	9.15"	8.45"
3/4"	8.28"	7.58"	3"	9.40"	8.70"
1"	8.40"	7.70"	4"	9.90"	9.20"
1-1/4"	8.53"	7.83"			



SIE SERIES INTEGRAL EXPLOSION PROOF¹² MASS FLOW METER

In-Line Style^{1, 7}

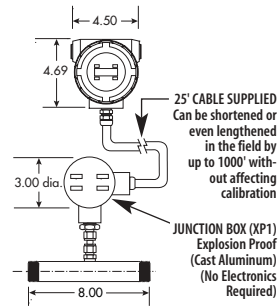
Explosion Proof Enclosure (Cast Aluminum). Class I, Division I, Group B, C, D. 150# or 300# flanged ends are optionally available. (1" Flow Body shown)



SIE SERIES INTEGRAL EXPLOSION PROOF¹² MASS FLOW METER

Insertion Style^{2, 7}

Explosion Proof Enclosure (Cast Aluminum). Class I, Division I, Group B, C, D. 150# or 300# flanged mounting is optionally available. Available probe lengths (C) are 6", 12", 15", 18", 24", 30", 36" or 48".

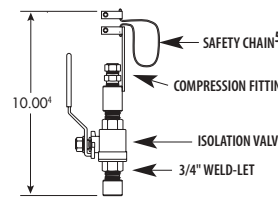


SRE SERIES REMOTE EXPLOSION PROOF¹² MASS FLOW METER

In-Line Style^{1, 7}

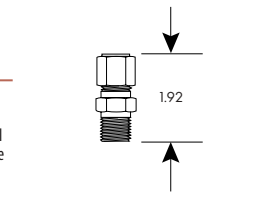
(Also available as Insertion Style)

Explosion Proof Enclosure (Cast Aluminum). Class I, Division I, Group B, C, D. 150# or 300# flanged ends are optionally available. (1" Flow Body shown) (Mounting Bracket is included)



SVA SERIES ISOLATION VALVE ASSEMBLY MOUNTING HARDWARE FOR INSERTION METERS¹³

The Isolation Valve Assembly permits insertion or removal of probe without shutting down the gas line.



STCF SERIES TEFLON FERRULE COMPRESSION FITTING MOUNTING HARDWARE

1/2" tube x 1/2" pipe fitting (shown, not to scale), is used for low pressure insertion applications to 125 psig (Stainless Steel Ferrule optional for higher pressure applications – up to 225 psig). Also available in 3/4" tube x 3/4" pipe size.

- NPT Fittings standard (150# or 300# flanges optional)
- Flanged Mounting available for high pressure operation
- 10" nominal when collar clamps are together
- Safety chain is sized depending on probe length to prevent probe from escaping above compression fitting.
- At 650 psig, force exerted on 1/2" diameter probe is approx. 125 psig.
- 3/4" Female NPT access holes for wiring (conduit compatible)
- Access holes are 1/2" NPT (supplied capped)
- All NEMA 4X Enclosures have 4" depth
- Circuit board available separately, 3" diameter.

- When flanges specified, face-to-face dimensions same as Length on Table on page 4.
- All Explosion Proof Meters are Class I, Group B, C, D, Class II Group E, F, G and Class IV and have Cenelec, EExd Enclosure IIC, IP66 ratings and are NEMA 4X, 7BCD and 9EFG rated. (All Junction Boxes, when applicable, are Class I, Group C & D; Class II, Group E, F, G, and NEMA 7 and NEMA 9 rated.)
- Used for pressures to 650 psig (shown for use with 1/2" x 3/4" NPT and 3/4" x 1" NPT.
- Other materials available
- NOTE:** Only one Conduit Hub is supplied, and one Cord Grip is supplied with SRG Series.